



INSTALLATION INSTRUCTIONS FOR BASSINI CARE TOILET SUITES

Bassini Care Back to Wall suites can be installed with back-entry or bottom-entry water connections. The Bassini Care Back to Wall & Wall Faced pans have S-Trap waste outlet connections.

Before installation, a visual check of the suite should be undertaken. The pan, seat and pan fixings come in one box and the cistern and valves are in a separate box. Ensure that nothing is damaged or missing.

The drawings on the back of this installation document show the "set-out" for the Bassini Care pans. The set-out for the pans is 140-250mm from the finished wall to the centre of the waste outlet.

SETUP :

1. Establish the rough in positions for the water inlet to the cistern, the waste outlet and the holes for the pan fixing brackets (see drawing overleaf). For back-inlet connections, ensure the water inlet connection is extending 40mm from the finished wall.
2. Prepare the waste outlet according to the required set-out. For S-Trap installations, cut the plastic trap connector to suit the set-out. (The grooves on the trap connector are 10mm apart.)
3. Drill the holes in the floor for the fixing brackets, ensuring that they are 40mm inside the traced outline of the pan (see separate instructions accompanying the bracket).

The installation of this toilet suite should be undertaken by a qualified and licensed plumber and in accordance with the National Plumbing Code AS/NZS 3500.2. Harmony sanitaryware products are designed to meet the appropriate Australian standards.

For further information, visit www.harmonybathroomware.com.au

S-Trap Installation for: Back To Wall Back-Entry versions:

Suits Models:

HARMONY13100 (Fig. 1)

1. Lubricate the rubber at the end of the plastic trap connector (using a water-based lubricant) and position it firmly in the waste outlet.
2. Fix the trap connector to the wall using the rod and bracket.
3. Align the pan with the trap connector, then push it back firmly towards the wall so there is a firm connection.
4. Bolt the cistern to the pan, flush it with a bucket of water to ensure there are no leaks.
5. Flush the water line.
6. Connect the water inlet valve using a 15mm mini cistern stop. Fill the cistern and ensure that water is at the correct level. Any minor adjustments should be in line with the instructions accompanying the inlet valve.

FINAL STEPS:

1. Ensure the toilet suite is level and that the cistern is square to the wall.
2. Attach the cistern to the wall.
3. Attach the seat according to the separate instructions.
4. Fix the pan to the floor using the screws and caps provided.
5. Silicone the suite to the floor and remove any excess.
6. Flush the toilet (both half flush and full flush) to ensure it is functioning correctly.

S-Trap Installation for: Back To Wall Bottom-Entry versions:

Suits Models:

HARMONY13100, (Fig. 1)

1. Lubricate the rubber at the end of the plastic trap connector (using a water-based lubricant) and position it firmly in the waste outlet.
2. Fix the trap connector to the wall using the rod and bracket
3. Bolt the cistern to the pan, flush it with a bucket of water to ensure there are no leaks.
4. Insert a flexible connector through the hole in the side of the pan and connect it to the water inlet at the base of the cistern.
5. Align the pan with the trap connector, then push it back firmly towards the wall so there is a firm connection
6. Connect the other end of the flexible connector to the water point (usually a mini cistern stop) on the wall adjacent to the pan. Fill the cistern and ensure that water is at the correct level. Any minor adjustments should be in line with the instructions accompanying the inlet valve.

FINAL STEPS:

1. Ensure the toilet suite is level and that the cistern is square to the wall.
2. Attach the cistern to the wall.
3. Attach the seat according to the separate instructions.
4. Fix the pan to the floor using the screws and caps provided.
5. Silicone the suite to the floor and remove any excess.
6. Flush the toilet (both half flush and full flush) to ensure it is functioning correctly.

S-Trap Installation for: Wall-Faced Pans with Concealed Cistern:

Suits Models:

HARMONY13500, (Fig.2)

1. Install the cistern in the wall as per the instructions accompanying the concealed cistern. It is important to adhere to the height and pressure recommendations for the cistern.
2. Set the flush pipe from the cistern at the appropriate height to engage with the pan.
3. Lubricate the rubber at the end of the plastic trap connector (using a water-based lubricant) and position it firmly in the waste outlet.
4. Fix the trap connector to the wall using the rod and bracket
5. Align the pan with the trap connector and flush pipe, then carefully push the pan back towards the wall so there is a firm connection of both the trap connector and the flush pipe.
6. Follow the instructions for filling and testing the concealed cistern

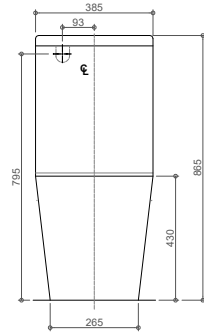
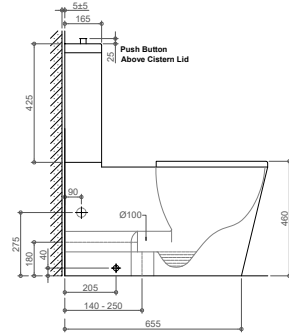
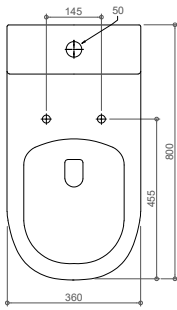
FINAL STEPS:

1. Attach the seat according to the separate instructions.
2. Fix the pan to the floor using the screws and caps provided.
3. Silicone the suite to the floor and remove any excess.
4. Flush the toilet (both half flush and full flush) to ensure it is functioning correctly.

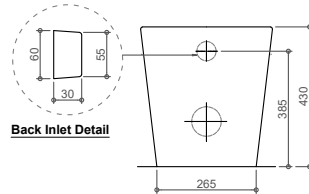
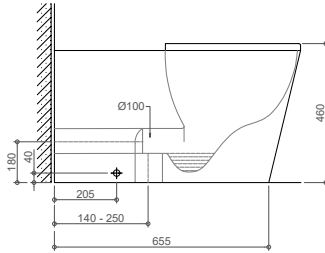
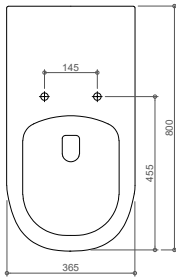
CARE AND MAINTENANCE :

1. Clean the toilet suite with liquid detergent and a damp cloth.
2. Do not use water additives, or place them in the cistern.

Disclaimer: Dimensions and set-outs contained in these instructions are correct at the time of publication. However, neither the manufacturer nor the distributor takes responsibility for printing errors. The manufacturer and the distributor reserve the right to vary specifications or delete toilet suite models without prior notification. A failure to follow these instructions, or a failure to have the product installed by a licensed tradesperson, may void the product's warranty.



BASSINI
Care Back to Wall Toilet Suite
(Fig.1) HARMONY13100



BASSINI
Care Wall Faced Toilet Suite
(Fig.2) HARMONY13500

HARMONY13500 – Wall Faced Pan:

1. Start at FINISHED FLOOR LEVEL (including height of final floor covering, eg tiles).
2. Mark pan inlet height SPECIFIC TO YOUR CHOSEN PAN MODEL (see above).
3. Measure 830mm above pan inlet height - this gives the centre of the button plate.

HARMONY 13100: TECHNICAL INSTALLATION INSTRUCTIONS

PAN AND CISTERN

- 1 Parts required to mount cistern to pan



- 2 Attach cistern bolts to pan, tighten bolts from underneath



- 3 Ensure outlet rubber is fitted to cistern



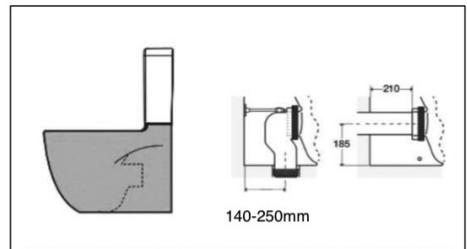
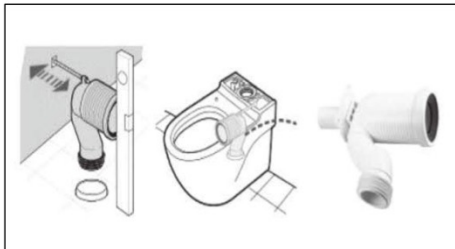
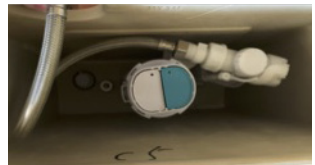
- 4 Sit cistern onto pan



- 5 Use supplied bolts to fasten cistern to pan

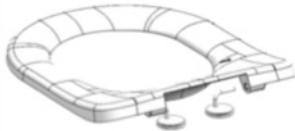


- 6 Top inlet finish

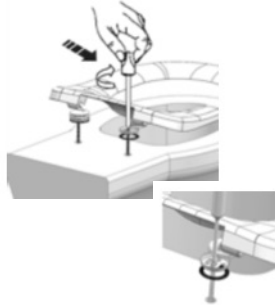


HARMONY 13100: TECHNICAL INSTALLATION INSTRUCTIONS SEAT AND COVER

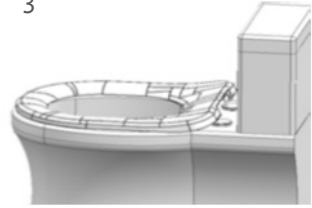
1



2



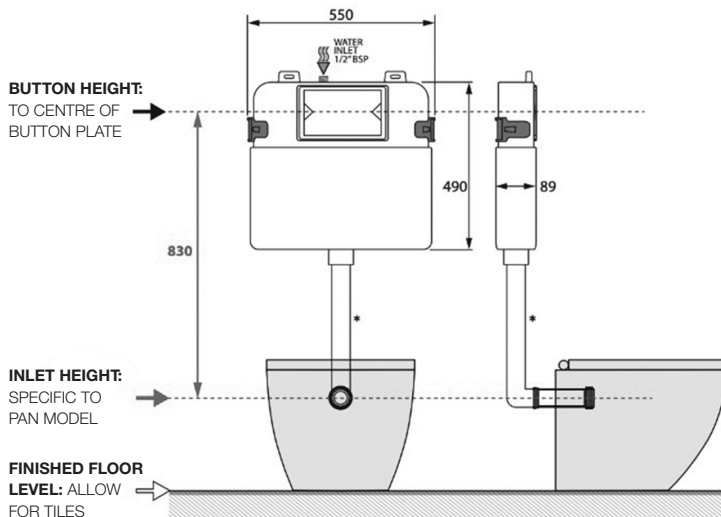
3



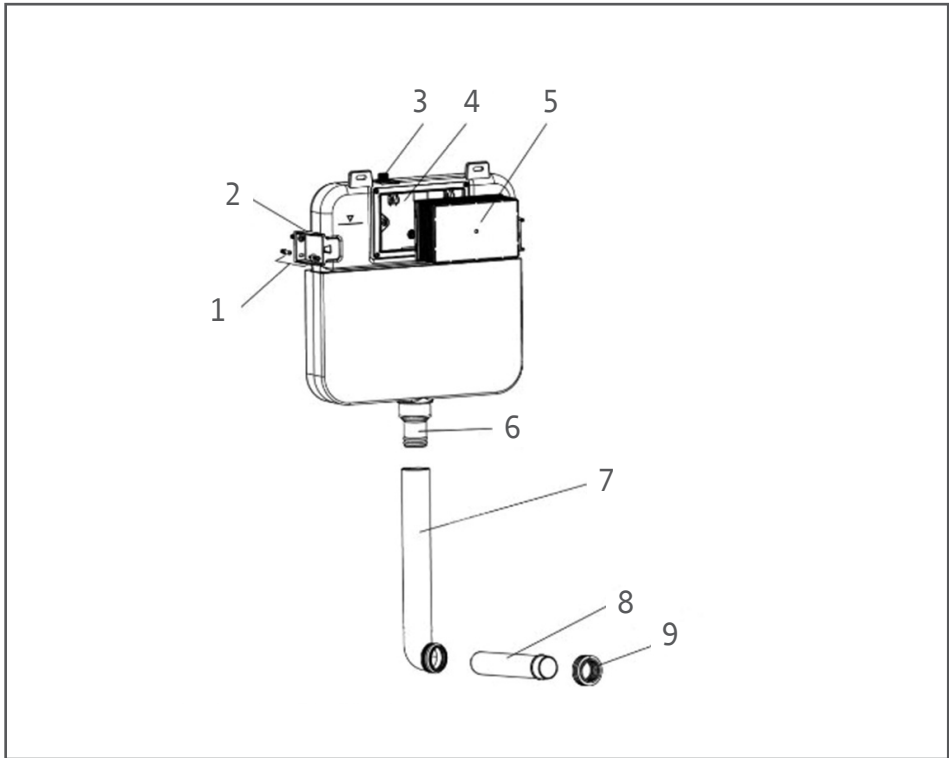
HARMONY13510 – In wall Cistern:

Install the cistern in the wall as per the instructions accompanying the concealed cistern. It is important to adhere to the height and pressure recommendations for the cistern.

HARMONY 13510: TECHNICAL INSTALLATION INSTRUCTIONS AND COMPONENTS



For further information, visit www.harmonybathroomware.com.au



NO.	PART NAME	QTY	FUNCTION
1	Expansion screw	4	Fixing cistern onto brick cavity wall (not required for stud wall)
2	Cistern fixing clip	2	
3	Angle valve	1	Fill valve inlet and shut-off
4	Cistern cover	1	Airproof tank and mounting of locking bracket
5	Plastic holder	1	To reserve space for installation of actuator during wall construction. To prevent dust and impurities from entering tank during wall construction.
6	Connector	1	Join cistern to down pipe
7	Down pipe	1	Join cistern and ceramic pan
8	Straight pipe	1	(Cut according to wall thickness) join cistern and ceramic pan
9	Kee seal	1	Join cistern and ceramic pan

Harmony

BASSINI

For further information, visit www.harmonybathroomware.com.au

Disclaimer: Dimensions and set-outs contained in these instructions are correct at the time of publication. However, neither the manufacturer nor the distributor takes responsibility for printing errors. The manufacturer and the distributor reserve the right to vary specifications or delete toilet suite models without prior notification. A failure to follow these instructions, or a failure to have the product installed by a licensed tradesperson, may void the product's warranty.